



INSTRUCTION BULLETIN

No. 340556
Machine: ATLV 4300
Published: 5-03
Rev. 00

NOTE: DO NOT DISCARD the Parts List from the Instruction Bulletin. Place the Parts List in the appropriate place in your machine manual for future reference. Retaining the Parts List will make it easier to reorder individual parts and will save you the cost of ordering an entire kit.

NOTE: Numbers in parenthesis () are reference numbers for parts listed in Bill of Materials.

Installation instructions for **kit number 368675**

DESCRIPTION:

This kit contains the parts needed to install a vacuum hose pivot on the model ATLV 4300 Litter Vacuum.

Please follow step-by-step instructions.

SPECIAL TOOLS / CONSIDERATIONS: Plasma Cutting Torch, Arc Welder, Hand Grinder

(Estimated time to complete: 2 hours)

PREPARATION:

(Refer to FIG. 1 thru 4)

FOR SAFETY: Before leaving or servicing machine, stop on level surface and set parking brake. Then turn off machine and remove key.

INSTALLATION:

(Refer to FIG. 1 thru 4)

1. Remove both the front and rear sections of vacuum hose from the vacuum hose support arm and set aside.
2. Remove the vacuum support arm from the machine and set aside.
3. Remove the old support arm pivot channel from the back side of the ROP bar with a plasma cutting torch. (Refer to FIG. 1)
4. Remove any rough or sharp edges with the hand grinder.
5. Weld **boom pivot channel 368667 (1)** to the underside of the ROP bar, with the flat edge and mounting holes facing towards the rear of the machine. (Refer to FIG. 2)

NOTE: Allow the area surrounding the welded parts to cool before proceeding with assembly.

6. Mount **boom pivot bracket 368666 (2)** to the back side of **boom pivot channel 368667 (1)** with four hex screws **76570 (3)**, **flat washers 32491 (5)** and lock nuts **08709 (4)**. (Refer to FIG. 3)
7. Replace the vacuum support arm in the **boom pivot bracket 368666 (2)** with new **spacer tube 368109 (6)**. (Refer to FIG. 4)

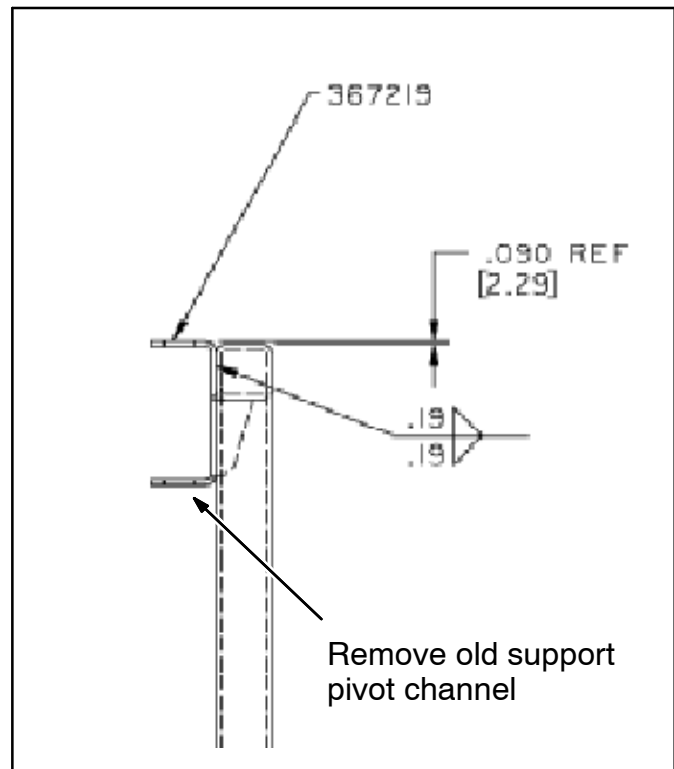
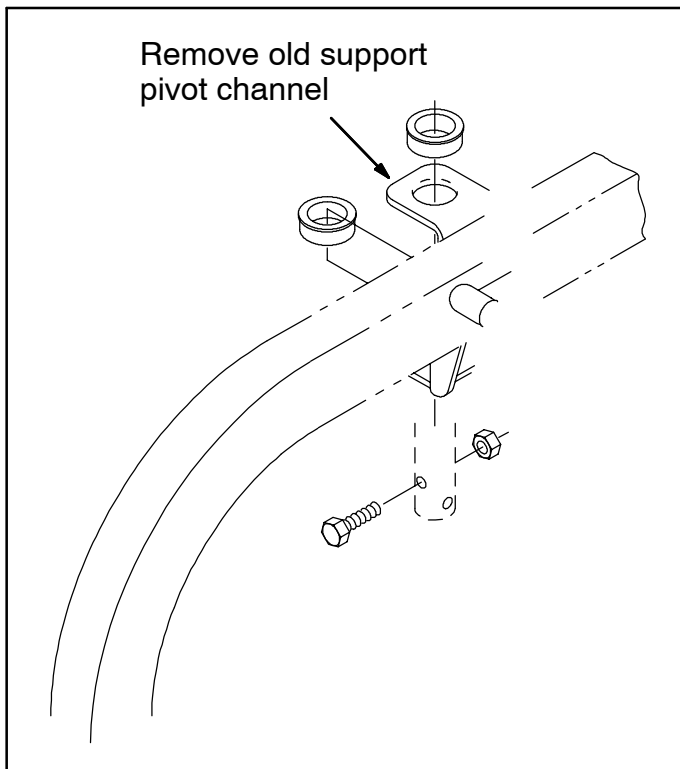


FIG. 1 - Old Support Pivot Channel Removal

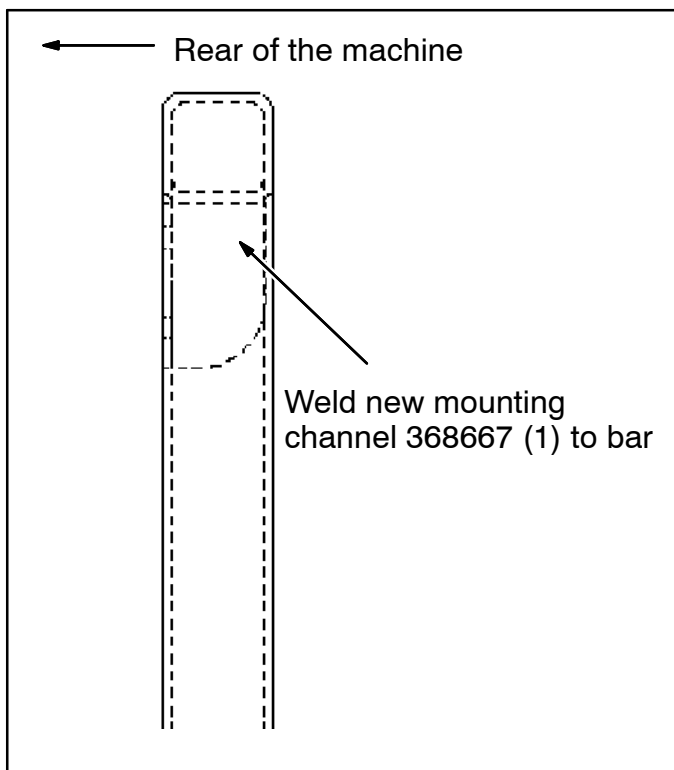
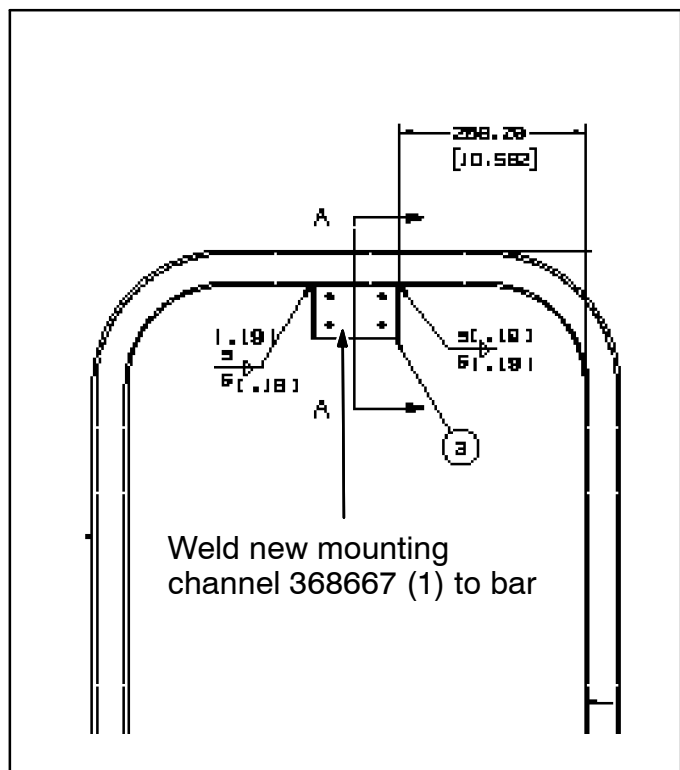


FIG. 2 - New Mounting Channel Installation

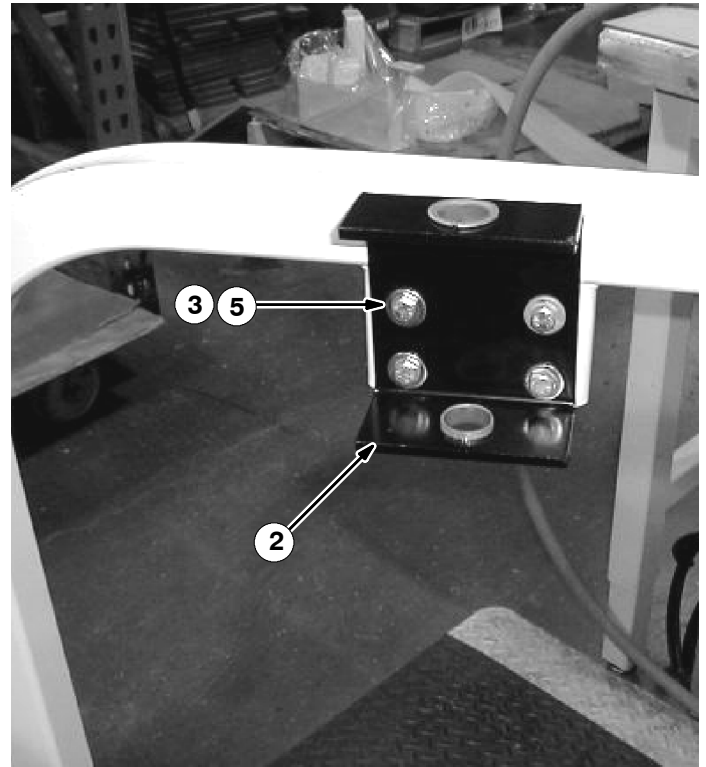
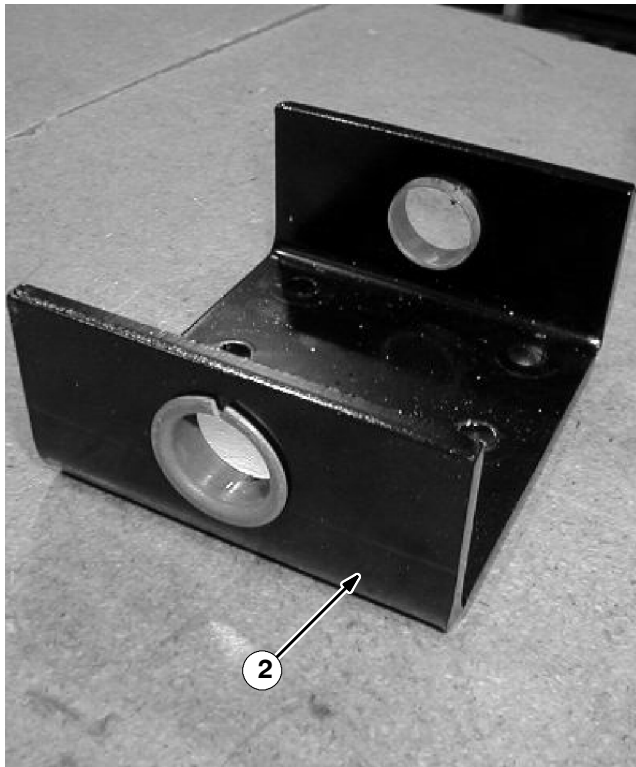


FIG. 3 - New Support Pivot Mounting bracket Installation

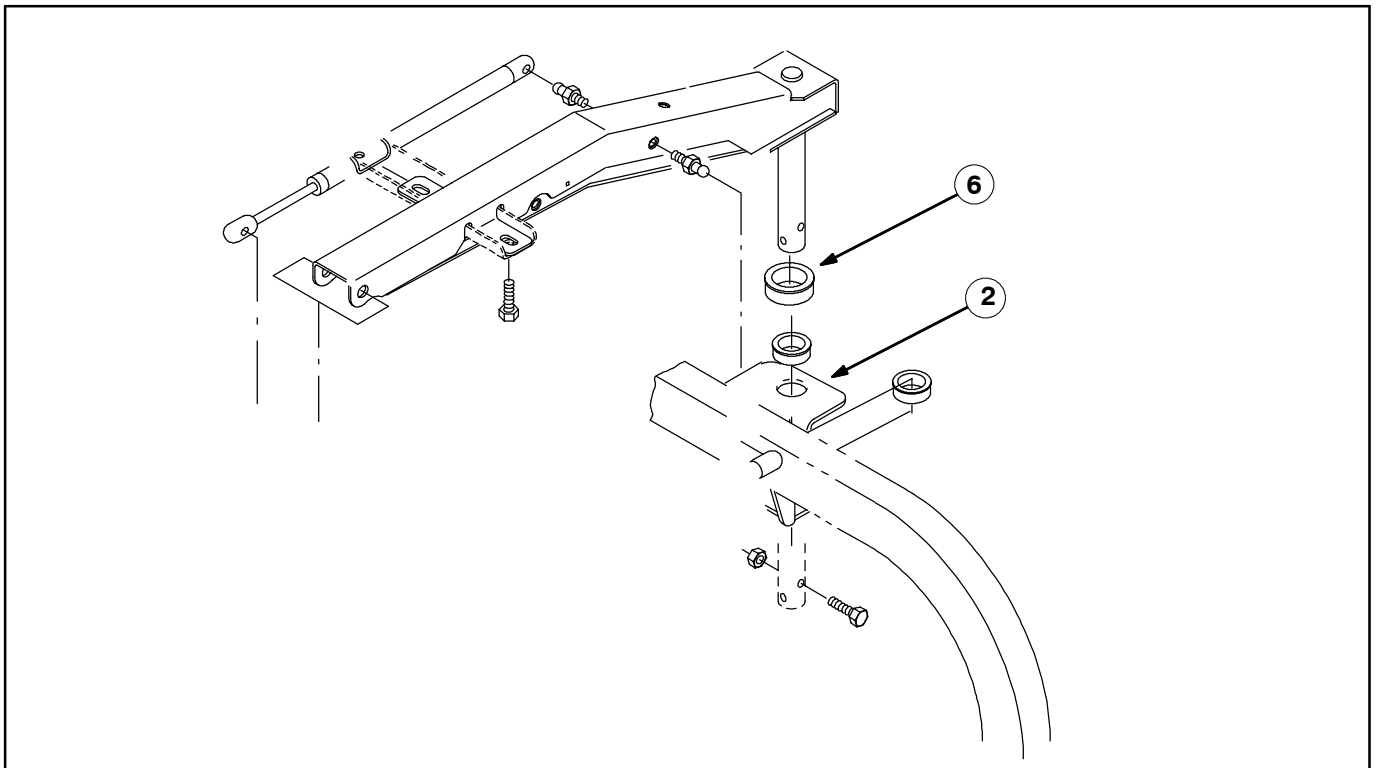


FIG. 4 - New Spacer Tube Installation

BILL OF MATERIALS FOR PIVOT BRACKET REPLMNT KIT 368675

Ref.	TENNANT Part No.	Description	Qty.
1	368667	Channel, mtg, boom pivot	1
2	368666	Bracket, mtg, boom pivot	1
3	76570	Screw, hex, M8 X 1.25 X 30, 8.8	4
4	08709	Nut, hex, lock, M8 X 1.25 NL	4
5	32491	Washer, flat, 0.31 std	4
6	368109	Tube, spacer, 1.5 OD 1.02B	1

TENNANT COMPANY
P. O. Box 1452
Minneapolis, MN 55440-1452